



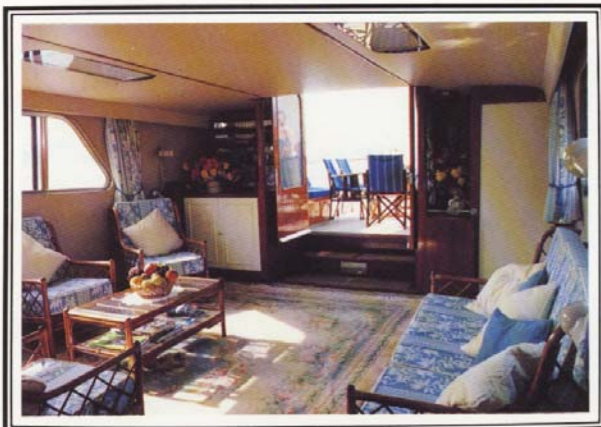


For further details & reservations contact:  
BOXSOUND LTD, LAND & LEISURE INVESTMENTS,  
18 Wilton Place, London SW1X 8RL  
071-928 7794



Please note that while every care has been taken in the preparation of this brochure the details therein do not constitute any part of an offer or a contract and no representation or warranty is given or implied as to their accuracy by the owner or his agents. All dimensions are approximate.

# EL VINO



El Vino was purpose built in the UK for a millionaire lord specifically for Mediterranean cruising. She is now privately owned and has recently been extensively refitted and upgraded for luxury chartering through Boxsound Land & Leisure Investments.

El Vino has the feel of a huge powerboat being large, quick and good looking and yet very very comfortable. Consequently, she is absolutely perfect for family or friends' holidays or for business trips.

El Vino has a wonderful afterdeck for entertaining and a superb stateroom both of quite exceptional proportion for a yacht of this size.

A classic El Vino day would be a high speed trip to a remote bay where one can swim, windsurf or water ski in warm aquamarine water followed by a Cordon Bleu lunch on the aft deck and a welcome festa in air conditioned comfort. One then has the choice of spending a romantic night on the hook or returning to a picturesque nearby port.

El Vino holidays offer everything you would expect from luxury chartering but at hotel prices. Our speciality is that we can provide our charterers with a competitive package which includes food, drink, fuel, mooring, taxes, air flights, use of boat toys, or any combination of these, all with personal crew service.

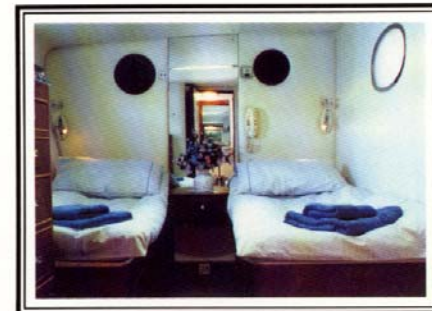
Full details of costs are available in the El Vino Charter Tariff sheet, and we are always happy to discuss your precise requirements.

## FEATURES INCLUDE:

Superb Stateroom (14' x 14') & two excellent twin bedded cabins each with en-suite showers & WCs.  
 Attractive Saloon (14½' x 13') with cane furniture, TV, video, video camera, stereo system and french doors to:  
 Large Aft Deck (18½' x 15') with fitted seating & sun canopy, perfect for outdoor entertaining & dining.  
 Matching dining tables in the saloon & aft deck offering up to 12 elegant place settings.  
 Fully Air Conditioned.  
 Metzeler Juca LS 13' ski/sailing tender with 30 HP outboard  
 Metzeler Jolly bathing dinghy with 2 HP outboard  
 Windsurfer and snorkeling gear.  
 Upper & forward sundecks with fitted seating & sunbeds.  
 Maximum speed 22 knots with cruising at 17/18 knots  
 Erudite English captain, cook & steward/deckhand.  
 Cruising Western Mediterranean.  
 Major refit winter 1986/87 for luxury chartering.  
 Boston whaler 11' ski tender with 40 HP outboard and  
 Volvo 265 GLE estate car are available when in home port.

## SPECIFICATION

Length 68' (20.6m), Beam 19'8" (5.9m), Draft 4'6" (1.4m),  
 Tonnage Gross 77,  
 Constructed in mahogany & teak by Bournecraft of Hamble UK,  
 Designed by Cox & Haswell featuring a planing hull,  
 Twin turbo-charged diesel GM V12 71 TI, totalling 1300 HP,  
 Fuel 1300 gals, Water 420 gals, Range approx 800 miles.



## INSTRUMENTATION & EQUIPMENT

Anritsu 40 mile radar  
 Cetrex autopilot  
 Navico 5600 VHF Radiotelephone

Ferroglyph 500 echo sounder  
 Sumlog VDO  
 Apelco Lorac C navigation system

Internal & Port telephone systems  
 Flying Bridge controls  
 Two sixmen liferafts

